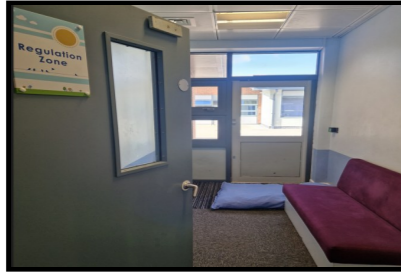


Spaces in school to help pupils regulate their behaviour



Soothing station



Regulation room



Sensory Room



Outdoor Sensory



Hide out room



Lego room



Elsa room



Outdoor trim trail



PD room

These are spaces where pupils can go to have time out, a bit of space or burn some energy off! Staff will always be near by to offer support.

Anti-bullying

Bullying will not be tolerated at The Whitehouse.



Bully is defined as the repetitive and intentional behaviour to be hurtful to another person. Bullying can be in person or online.

Our anti-bullying leads at The Whitehouse are Donna Kaye and Mike Walker.

We teach pupils about how to spot bullying and how to report bullying.



WHITEHOUSE

Behaviour and Relationship Policy Pupil version May 2024

The Whitehouse PRU is a pupil referral unit for primary school-aged pupils. Our prime purpose is to prepare pupils to be ready to return to a mainstream school or to transfer to the most appropriate provision that meets their unique needs. Sometimes our pupils find it difficult to manage and share their feelings, and they often display behaviours that are outside of their control. We understand that it is important to support them in managing their big emotions when they are feeling overwhelmed or when their emotions are getting the best of them. We provide a safe and nurturing environment where pupils can re-engage with education and build self-regulation skills along the way.

Our School Values



The rights of all pupils are The Whitehouse PRU

- You have the right to be heard and feel **safe**.
- You have the right to be recognised as a unique individual.
- You have the right to an education with learning opportunities that support you to **engage** and foster a love of learning.
- You have the right to the support and help you need.
- You have the right to be treated with **respect** and fairness.

Our school behaviour values and expectations

All pupils at The Whitehouse have the right to learn in an environment which is calm, safe and supported where they are treated respectfully.

- Pupils are encouraged to respect others and the environment around them.
- Pupils are encouraged to show kindness to all and be inclusive.
- Pupils are supported to celebrate every success no matter how small.

Rewards and Recognition

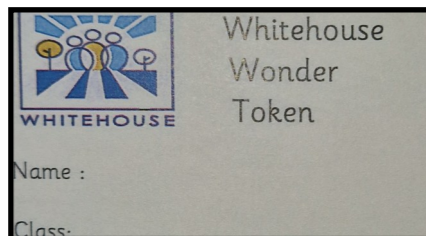
Pupils are rewarded and recognised for making positive choices and contributions. We know that that recognising and rewarding good behaviour encourages this to be repeated by pupils.

RESPECT Voucher

Pupils earn RESPECT points throughout the day for the following reasons:

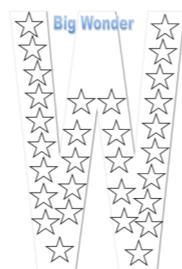


Pupils can earn RESPECT points to cash in at The Whitehouse shop and earn a daily Whitehouse Wonder note and Work note. Pupils achieving their Whitehouse Wonder note each day will be awarded a Wonder Token. They can put this into either the weekly draw box or the monthly draw box. The draws will take place in celebration assembly.



BIG W

Pupils work together to contribute to a Big W. This is a class reward which is usually a short enrichment activity.



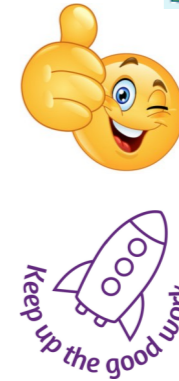
Behaviour points and recognition notes home

All pupils work to earn behaviour points throughout the day. Pupils will be set a personal behaviour target to focus on. They will also be set a behaviour points target score each day. Pupils aim to achieve 3 points during each lesson:

Behaviour Points & Targets		
Behaviour points will be rewarded each lesson for the following:		
Safe	Engage	Respect
1	1	1

Other rewards include:

- Headteacher award
- Verbal praise
- Telephone call home
- Stickers, certificates and stampers
- Class reward time



Unacceptable Behaviour

Behaviours which are unacceptable include:

- Being verbally unkind to others including racist and homophobic language
- Damage to property
- Physical harm to adults and other pupils
- Inappropriate language

Our first priority is always to ensure the safety of pupils and staff and to restore/maintain a calm environment. Staff always respond to unacceptable behaviour in a consistent, fair and proportionate manner.

Staff work with pupils to help them understand that there are consequences for unacceptable behaviour and poor choices. Sanctions are considered on a case by case basis.

Possible sanctions include:

- A verbal warning and reminder of our school expectations
- Loss of points / rewards / wonder tokens
- Loss of outdoor / indoor breaktime
- Communication with parents
- Stay back with consent from parents